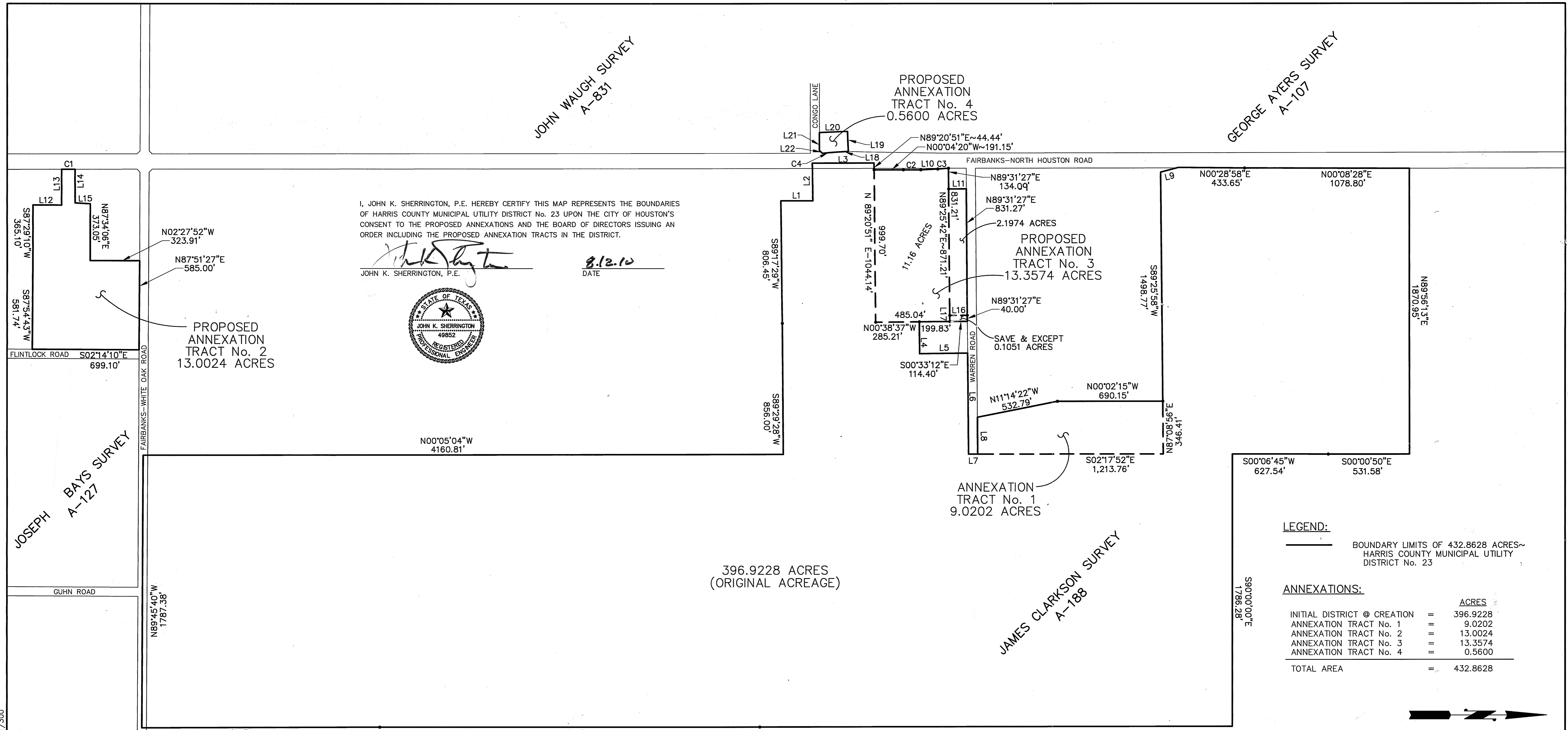


FILENAME: DISTRICT\_ANNEX\_1-2-3.dwg PLOT DATE: 08-12-10 SCALE: 1/300



I, JOHN K. SHERRINGTON, P.E. HEREBY CERTIFY THIS MAP REPRESENTS THE BOUNDARIES OF HARRIS COUNTY MUNICIPAL UTILITY DISTRICT No. 23 UPON THE CITY OF HOUSTON'S CONSENT TO THE PROPOSED ANNEXATIONS AND THE BOARD OF DIRECTORS ISSUING AN ORDER INCLUDING THE PROPOSED ANNEXATION TRACTS IN THE DISTRICT.

*John K. Sherrington*  
 JOHN K. SHERRINGTON, P.E. DATE 8.12.10



PROPOSED ANNEXATION TRACT No. 2  
 13.0024 ACRES

PROPOSED ANNEXATION TRACT No. 4  
 0.5600 ACRES

PROPOSED ANNEXATION TRACT No. 3  
 13.3574 ACRES

ANNEXATION TRACT No. 1  
 9.0202 ACRES

396.9228 ACRES  
 (ORIGINAL ACREAGE)

**LEGEND:**

BOUNDARY LIMITS OF 432.8628 ACRES~  
 HARRIS COUNTY MUNICIPAL UTILITY DISTRICT No. 23

**ANNEXATIONS:**

	ACRES
INITIAL DISTRICT @ CREATION	= 396.9228
ANNEXATION TRACT No. 1	= 9.0202
ANNEXATION TRACT No. 2	= 13.0024
ANNEXATION TRACT No. 3	= 13.3574
ANNEXATION TRACT No. 4	= 0.5600
<b>TOTAL AREA</b>	<b>= 432.8628</b>

**CURVE TABLE**

CURVE	LENGTH	RADIUS	DELTA	CHORD BEARING	CHORD DISTANCE
C1	88.18'	1860.00'	02°42'59"	S01°31'19"E	88.17'
C2	113.91'	2,536.20'	02°34'24"	N01°21'32"W	113.90'
C3	70.69'	2,436.20'	01°39'45"	N01°48'52"W	70.69'
C4	131.96'	1,960.00'	03°51'27"	S04°21'46"E	131.94'

**LINE TABLE**

LINE	LENGTH	BEARING
L1	208.95	N00°02'14"W
L2	244.00	S89°21'34"W
L3	402.90	N00°03'41"W
L4	208.38	N89°27'35"E
L5	314.13	N00°34'46"W
L6	660.09	N89°24'18"E
L7	60.00	N00°02'15"W
L8	242.92'	S89°25'41"W
L9	119.10	N14°40'02"W
L10	111.05'	N02°38'44"W
L11	115.86'	N00°34'59"W
L12	187.50'	N02°52'50"W
L13	232.32'	S87°29'10"W
L14	218.48'	N87°22'54"E
L15	99.28'	N00°36'36"E
L16	114.47'	S00°33'12"E
L17	40.00'	N89°25'42"E
L18	37.72'	S02°26'03"E
L19	130.12'	N87°36'41"E
L20	183.60'	N02°16'27"W
L21	116.36'	N89°57'38"W
L22	26.70'	S42°22'58"W

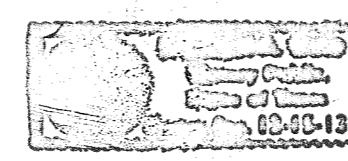
WE, UNDERSIGNED MEMBERS OF THE BOARD OF DIRECTORS OF HARRIS COUNTY MUNICIPAL UTILITY DISTRICT No. 23 DO HEREBY CERTIFY THAT THIS MAP IS A COMPLETE AND ACCURATE MAP SHOWING THE BOUNDARIES OF SAID DISTRICT.

*Terry M. Delasalle*  
 TERRY M. DELASALLE, PRESIDENT  
*Jeffrey Blackwell*  
 JEFFREY BLACKWELL, VICE PRESIDENT  
*Jim Haney*  
 JIM HANEY, SECRETARY  
*Christy Shepard*  
 CHRISTY SHEPARD, TREASURER  
*Oscar Dominguez*  
 OSCAR DOMINGUEZ, DIRECTOR

STATE OF TEXAS  
 COUNTY OF HARRIS

BEFORE ME, THE UNDERSIGNED, A NOTARY PUBLIC IN AND FOR SAID COUNTY AND STATE, ON THIS DAY PERSONALLY APPEARED CHRISTY SHEPARD, OSCAR DOMINGUEZ, TERRY M. DELASALLE, JEFFREY BLACKWELL, AND JIM HANEY KNOWN TO ME TO BE THE PERSONS AND OFFICERS WHOSE NAMES ARE SUBSCRIBED HEREON, AND AFFIRMED AND ACKNOWLEDGED THE STATEMENT SUBSCRIBED TO THE ABOVE AND THAT THEY EXECUTED THE SAME IN THE CAPACITY THEREIN STATED.

GIVEN UNDER MY HAND AND SEAL OF OFFICE THIS 12<sup>th</sup> DAY OF August 2010.



*[Signature]*  
 NOTARY PUBLIC IN AND FOR  
 Harris COUNTY, TEXAS  
 MY COMMISSION EXPIRES 12-15-13

**Sherrington, Inc.**

Consulting Civil Engineer  
 14870 Skinner Road  
 Cypress, Texas 77429  
 281-758-1531  
 Firm Registration No. F-525

HARRIS COUNTY MUNICIPAL  
 UTILITY DISTRICT No. 23  
 HARRIS COUNTY, TEXAS

DISTRICT BOUNDARY MAP

SCALE: 1" = 300'	PROJECT NUMBER: 075-02-001
DESIGNED: J.K.S.	DATE: AUG. 2010
DRAWN: A.B.	SHEET: 1 of 1